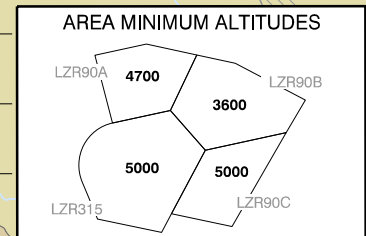
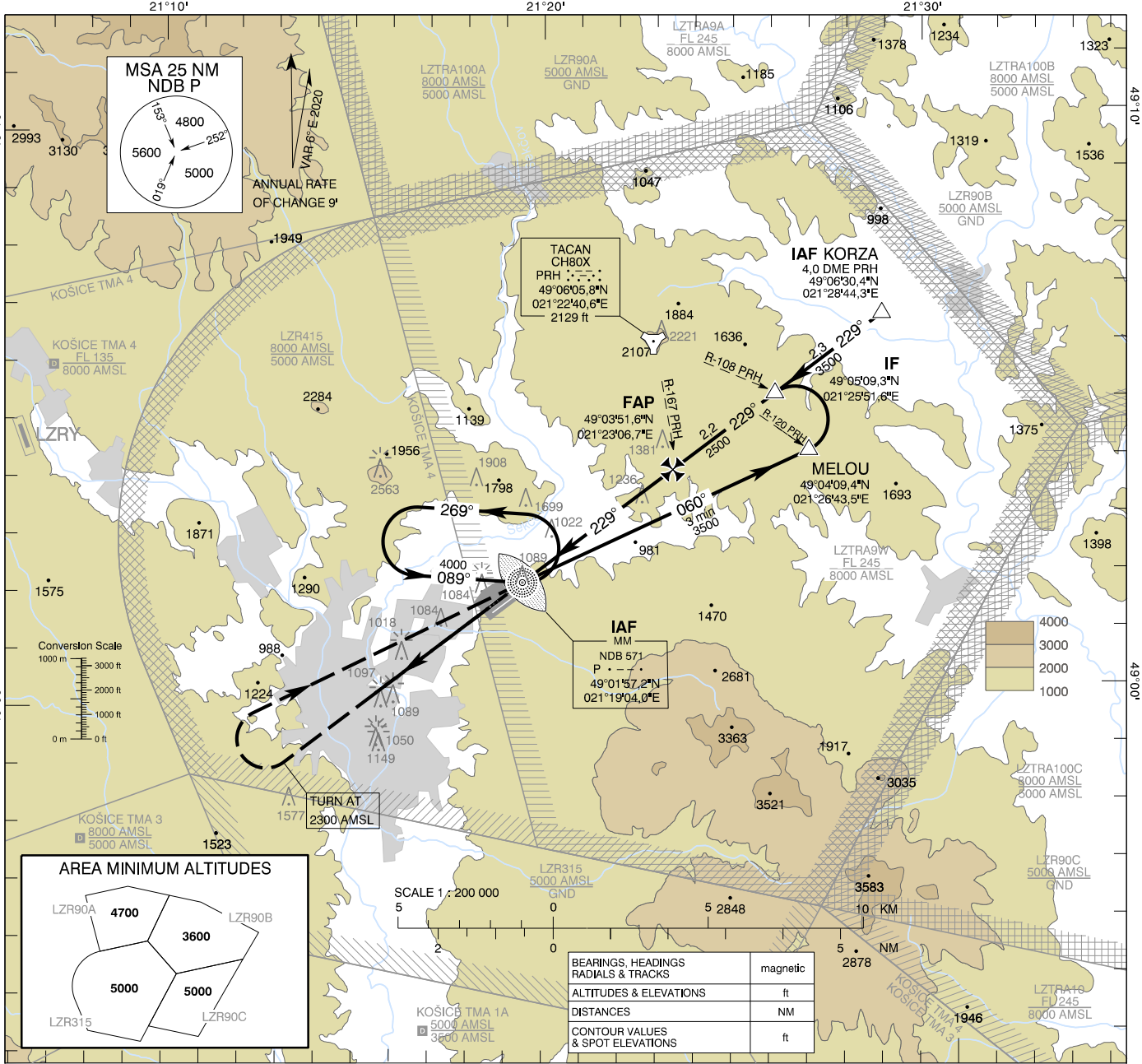


**INSTRUMENT
APPROACH
CHART - ICAO**

TRANSITION ALTITUDE
10 000 ft
AD ELEV 1035 - 37 hPa
THR RWY 23 ELEV 1034,7 - 37 hPa

PREŠOV VEŽA 135,500
PREŠOV PRECISION 397,050
PREŠOV RADAR 134,325

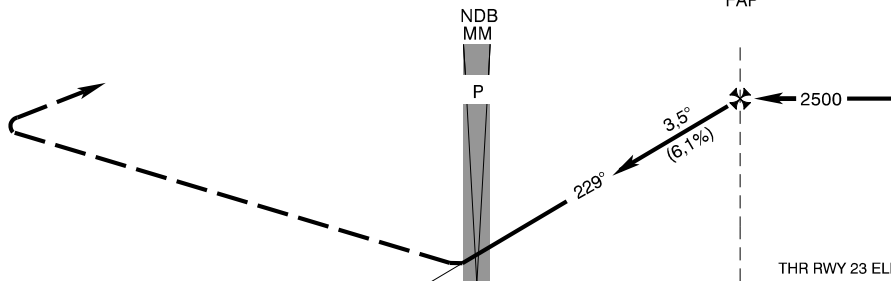
**PREŠOV (LZPW)
PAR RWY 23
ACFT CAT H**



BEARINGS, HEADINGS RADIALS & TRACKS	magnetic
ALTITUDES & ELEVATIONS	ft
DISTANCES	NM
CONTOUR VALUES & SPOT ELEVATIONS	ft

MISSED APPROACH

Climb STRAIGHT AHEAD, at 2300 AMSL turn right to NDB P, climbing to 4000 AMSL and hold. No turn before 6,2 DME PRH.



TCH 35

THR RWY 23 ELEV 1034,7 - 37 hPa

OCA (OCH)	H
Straight-in Approach	ft 1235 (200)

Ground speed	kt	70	90	100	110
Rate of descent (6,1%)	ft/min	434	557	619	681

Timing not authorized for defining the MAPT.

CHANGES: LZTRA09A, LZTRA09W remained to LZTRA9A, LZTRA9W